

# Streamlined NightFINDER™

**“Thermal Camera and Searchlight aesthetically integrated into a compact low profile design for Yachts and High Speed Patrol Craft”**

## Features

- **Integrated Searchlight...** Powerful Xenon Searchlight with Remote Electric Beam-size Focus Control services a distance of 3873 meters on a clear night.
- **Integrated Thermal Camera...** Range of detection 800 Meters (distance approximate depending on heat signature of object and environmental conditions).
- **Proportional-Speed Controls...** both speed and direction controlled by moving the Joystick.
- **Continuous 360° Motion...** Slip-rings in base provide continuous, unlimited, 360° motion with no stop points.
- **Anti-icing Heater (camera)...** prevents ice build-up on camera lens in cold weather.
- **Optional Anti-icing Heaters (Pan/Tilt)...** optional feature which prevents ice build-up in cold weather.
- **Optional Position-Indication...** Console Panel displays horizontal aiming position in degrees.
- **Optional Upside Down Mounting...** mounting under ship's masts, and Radar Platforms, frees mounting space!



**Compact Rugged Design!**



**Search and Rescue**



**Covertly spot Intruders**

By integrating a searchlight and thermal camera within the same design, you will realize the following benefits: **Save Money... Reduce Mounting Space...** have **“Built-in-Tracking between Searchlight and Camera”**, and provide **“Synergism with other Night Vision Systems”**.

The camera and searchlight are precisely aligned, so they track together on the same target as the Pan/Tilt Base moves. Therefore, the camera can be used as a **“Covert Targeting Device”** to instantly and accurately illuminate the object (i.e. operator scans horizon covertly with camera, and when further recognition is required, the searchlight instantly and accurately illuminates the target!). This not only enhances ship navigation, but will also deny an intruder's night vision, with an intense blinding beam of light. And the optional strobe feature provides a disorienting and dizzying effect, thereby transforming the NightFINDER™ into a **“Powerful Nonlethal Weapon!”** Scroll down to see the Camera Specifications (ref. page 2), and application diagrams with descriptions (ref. Exhibits A, B, C, D and E).



**“Leaders in Searchlight Technology for over 122 Years”**

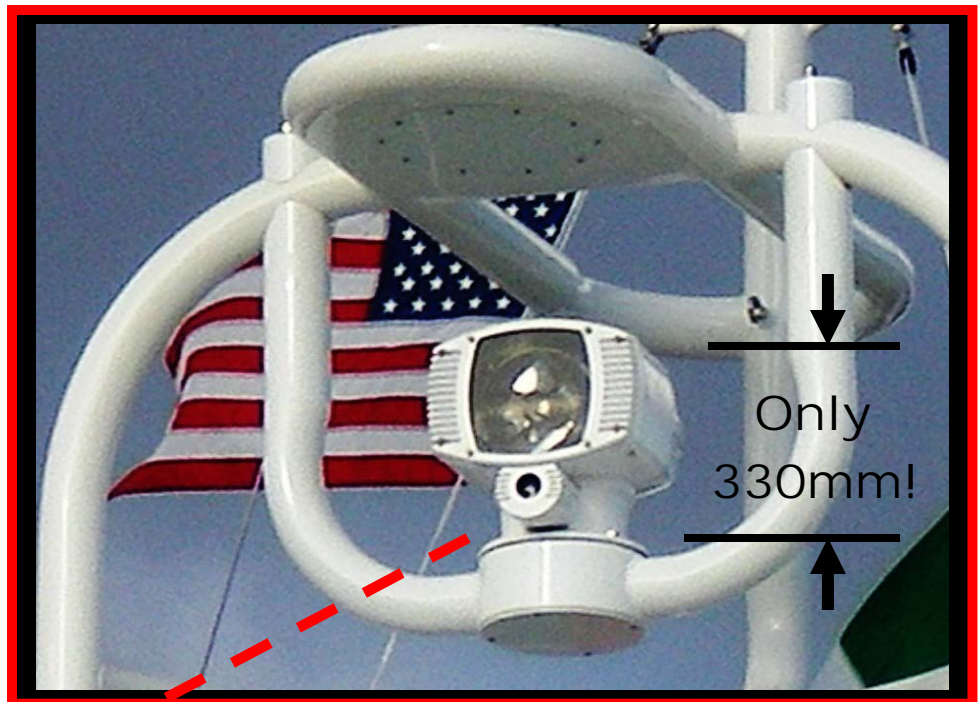


Bridge not seen at Night!

Bridge seen with Camera!

### Thermal Camera Specifications

- Sensor Type: Uncooled
- Sensor: 384 x 288
- Field of View: 28° H x 21° V
- Temp Range: -40°C to +80°C
- Video Signal: NTSC or PAL
- Input Voltage: 12VDC
- Wattage: 15 Watts
- Distance: 800 Meters



**Aesthetic Design for Custom Yachts!**

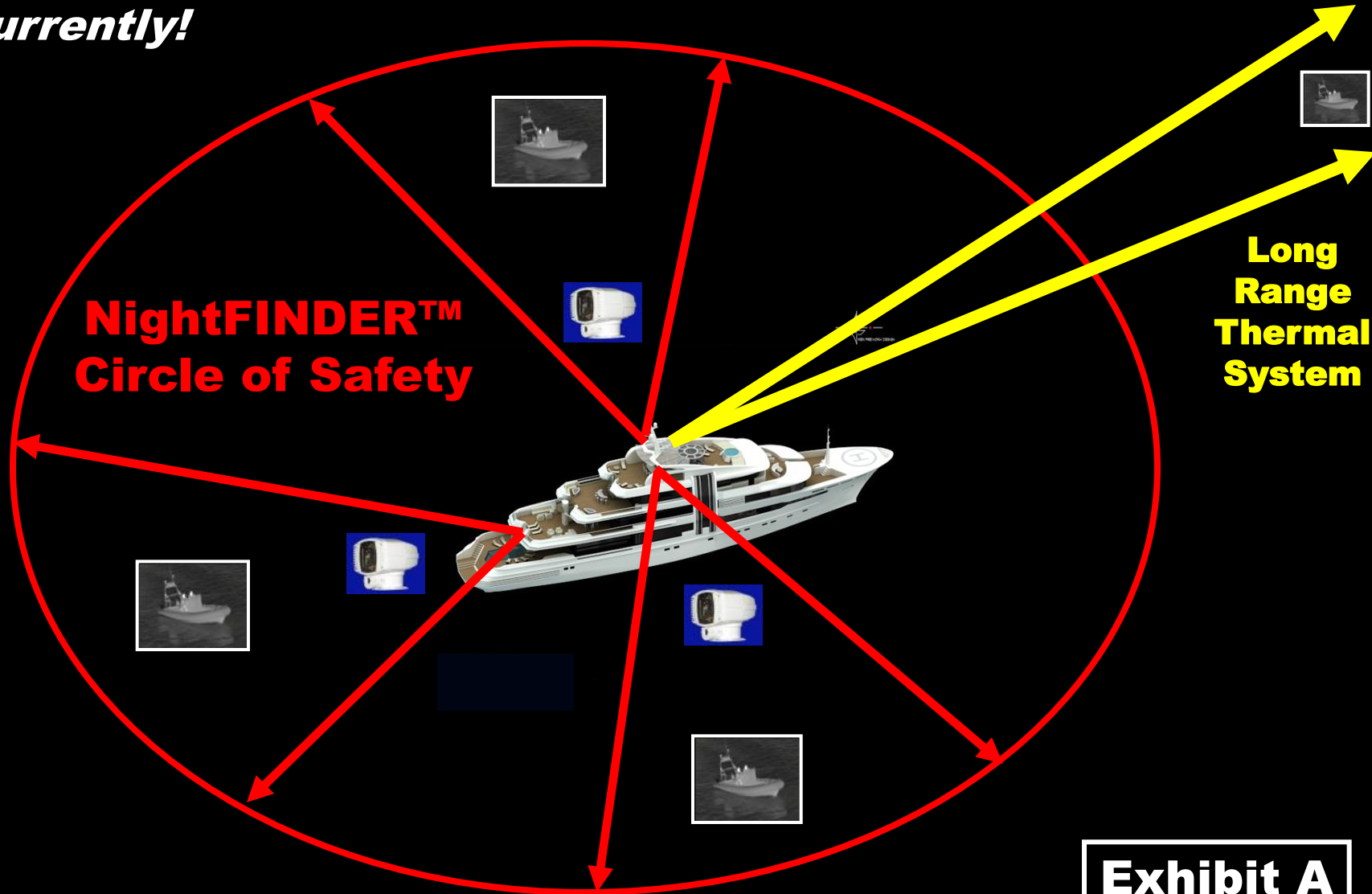


**Compact and Rugged for Patrol Boats!**



*"Prestigious Customers"... Carlisle & Finch invented the first searchlight in 1894 and is the standard for the US Navy and Coast Guard. C&F remains the standard for the World's most prestigious Yacht Builders (e.g. FEADSHIP of Holland), and the largest Commercial Marine Fleets in the world!*

***“A Complete Security Solution”... Even the highest end long range Night Vision Systems can only see in one direction at one time. NightFINDER™ Systems help form a “Circle of Safety” around the vessel, seeing covertly on all sides concurrently!***



**Exhibit A**

***Precise alignment of the Searchlight and Camera on the same target, allows them to track on that same target, as the Pan/Tilt base moves. As a result, the Camera can be used as a “Covert Targeting Device” to strategically light up a person or object!***



**Exhibit B**

***“High Powered Strobe”... blinds and disorients the intruder, transforming the NightFINDER™ into a Strategic Nonlethal Weapon!***



**Strobe!**



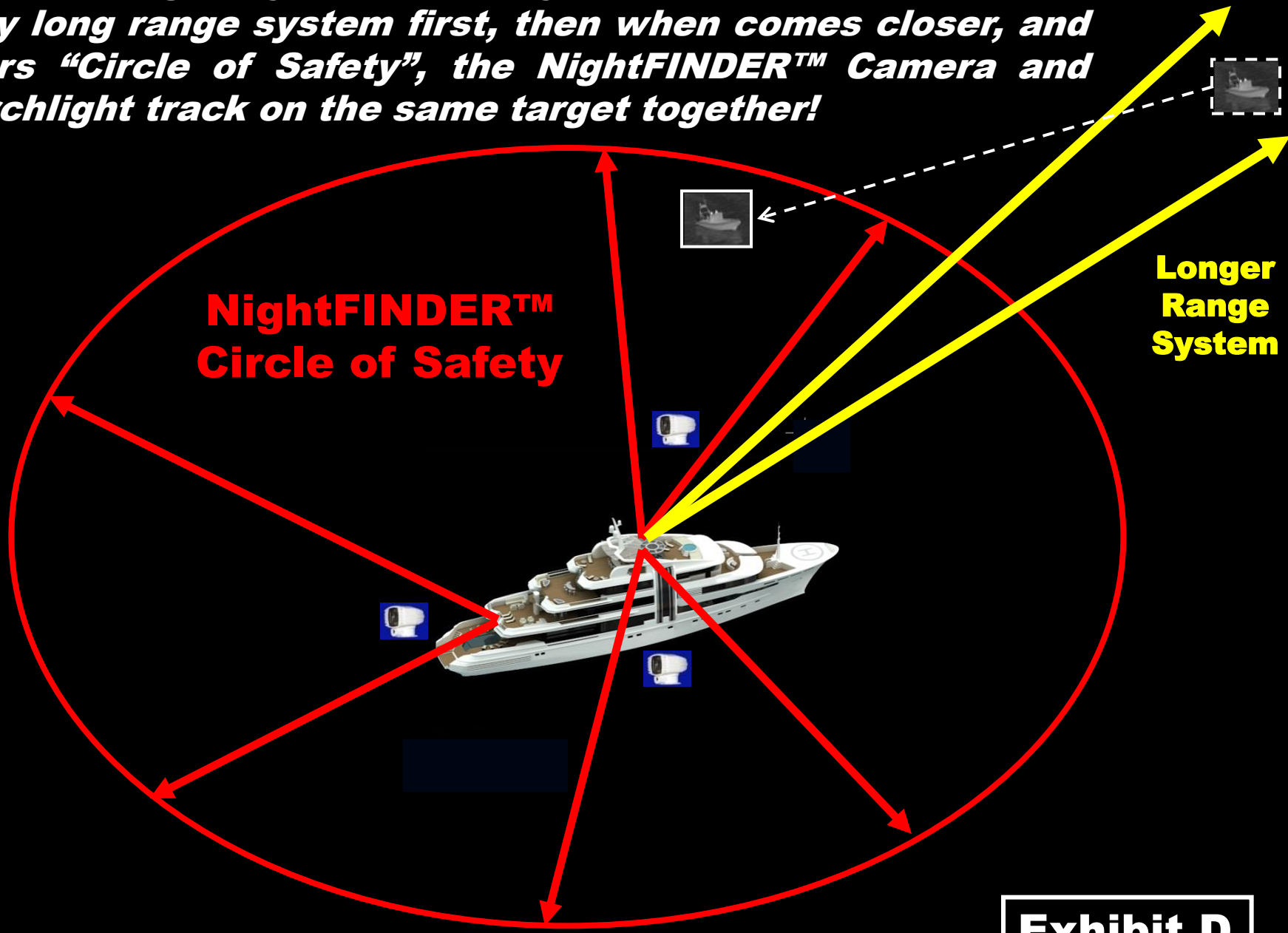
**Thermal Camera**



**Exhibit C**



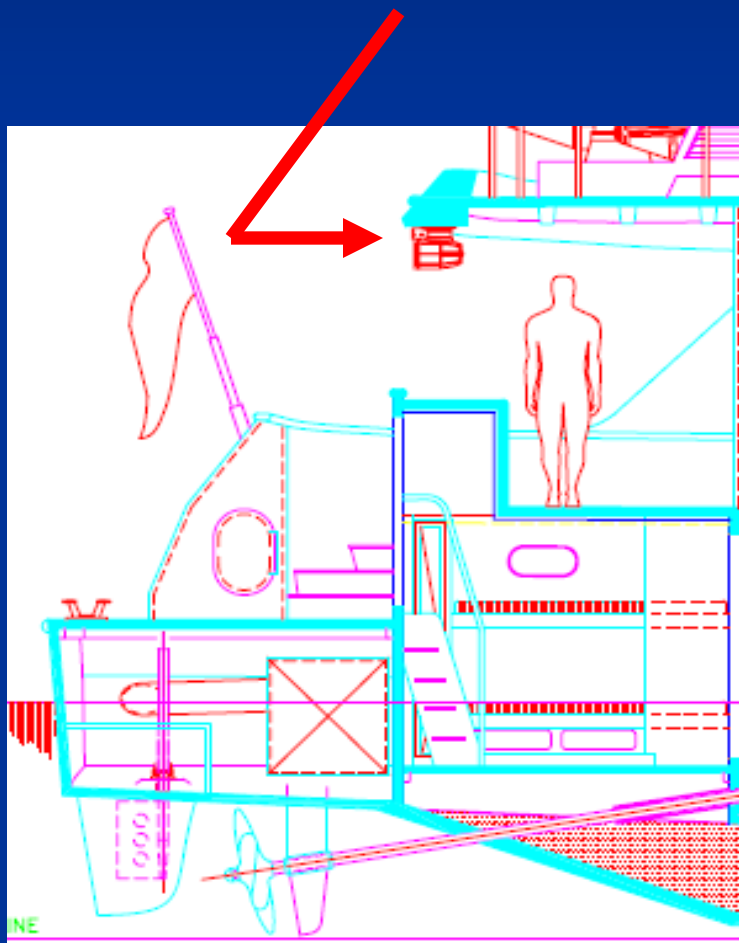
**Works Strategically with other Systems... Intruder is picked up by long range system first, then when comes closer, and enters "Circle of Safety", the NightFINDER™ Camera and Searchlight track on the same target together!**



**Exhibit D**

# Cover your A#% (aft)!

**Compact NightFINDER™ mounted upside down at stern, provides protection from intruders coming from behind vessel!**



**Exhibit E**