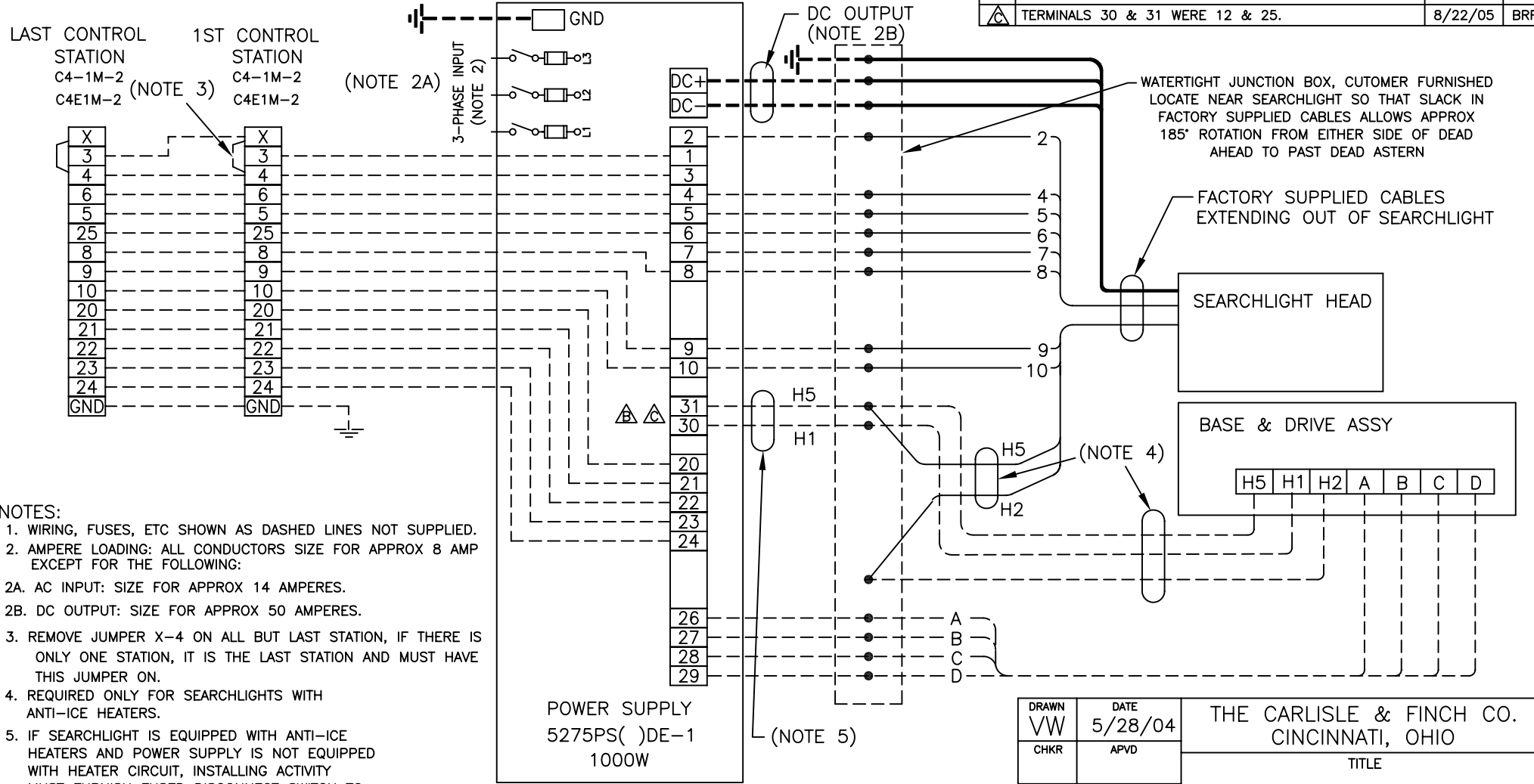


SYM	REVISION	DATE	APVD
△	TERMINALS 30 & 31 WERE 12 & 25.	8/22/05	BRF



- NOTES:
1. WIRING, FUSES, ETC SHOWN AS DASHED LINES NOT SUPPLIED.
  2. AMPERE LOADING: ALL CONDUCTORS SIZE FOR APPROX 8 AMP EXCEPT FOR THE FOLLOWING:  
2A. AC INPUT: SIZE FOR APPROX 14 AMPERES.  
2B. DC OUTPUT: SIZE FOR APPROX 50 AMPERES.
  3. REMOVE JUMPER X-4 ON ALL BUT LAST STATION, IF THERE IS ONLY ONE STATION, IT IS THE LAST STATION AND MUST HAVE THIS JUMPER ON.
  4. REQUIRED ONLY FOR SEARCHLIGHTS WITH ANTI-ICE HEATERS.
  5. IF SEARCHLIGHT IS EQUIPPED WITH ANTI-ICE HEATERS AND POWER SUPPLY IS NOT EQUIPPED WITH HEATER CIRCUIT, INSTALLING ACTIVITY MUST FURNISH FUSED DISCONNECT SWITCH TO SUPPLY HEATERS FROM A SEPERATE SOURCE OF 120/1/50-60 FOR 7 AMP LOAD.
  6. TERMINALS ARE SHOWN FOR CLARITY, NOT IN ACTUAL PHYSICAL LOCATION.

REFERENCE ELEMENTARY WIRING DIAGRAMS:  
WD14021

DRAWN VW	DATE 5/28/04	THE CARLISLE & FINCH CO. CINCINNATI, OHIO	
CHKR	APVD	TITLE	
USED ON: 1000W XE SL, DEC 120VDC MOTOR SINGLE-MULTIPLE CONTROL STATIONS WITH 7396-2 PS SPEED CONTROL		WIRING DIAGRAM, INTERCONNECTION	
SIZE B	DRAWING NO. WD14020	REV C	SCALE NONE