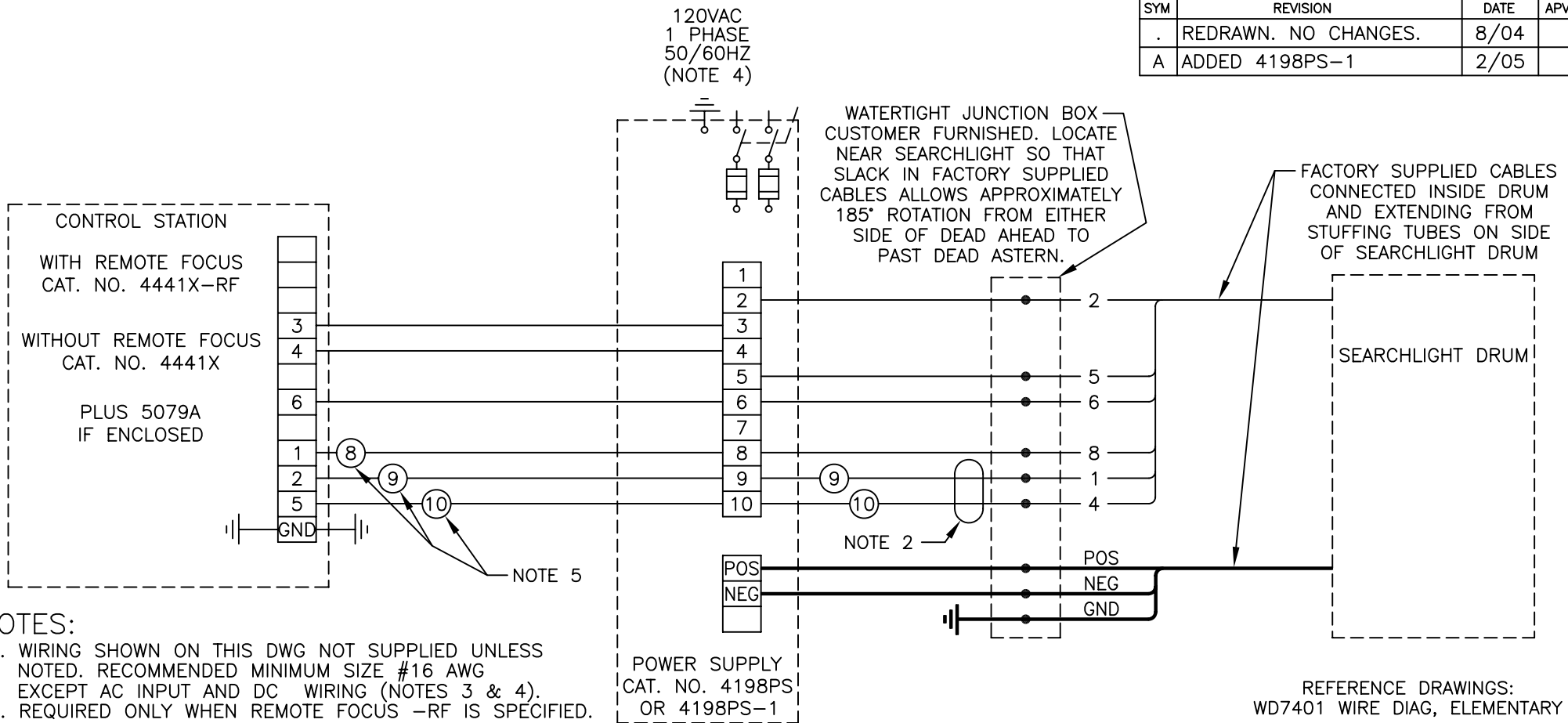


SYM	REVISION	DATE	APVD
.	REDRAWN. NO CHANGES.	8/04	
A	ADDED 4198PS-1	2/05	



NOTES:

1. WIRING SHOWN ON THIS DWG NOT SUPPLIED UNLESS NOTED. RECOMMENDED MINIMUM SIZE #16 AWG EXCEPT AC INPUT AND DC WIRING (NOTES 3 & 4).
2. REQUIRED ONLY WHEN REMOTE FOCUS -RF IS SPECIFIED.
3. DC CONDUCTORS. SIZE FOR 25 AMP LOAD MINIMUM.
4. SINGLE PHASE 120 VOLTS 50-60 HZ INPUT. SIZE FOR 20 AMP LOAD MINIMUM.
5. NUMBERS IN CIRCLES REFER TO POWER SUPPLY TERMINALS CONNECTED TO DIFFERENT NUMBERS IN CONTROL STATION OR SEARCHLIGHT.
6. TERMINAL BLOCK NUMBERS SHOWN ABOVE (FOR CLARITY) ARE NOT NECESSARILY IN SAME PHYSICAL LOCATION TO EACH OTHER AS THEY ARE ON THE ACTUAL TERMINAL BLOCK.

REFERENCE DRAWINGS:
WD7401 WIRE DIAG, ELEMENTARY

DRAWN RPA	DATE 8/25/04	THE CARLISLE & FINCH CO. CINCINNATI, OHIO	
CHKR	APVD	TITLE	
USED ON: 500W XE SL, MANUAL CONTROL		WIRING DIAGRAM, INSTALLATION	
SIZE B	DRAWING NO. WD7576	REV A	
SCALE FULL			