

# 305mm Diameter Xenon Searchlight

**25 Million Beam Candlepower with Electric Beam-Size Focus!**

## FEATURES



**C&F is the Standard of the U.S. Coast Guard, U.S. Navy, and U.S. Prison System!**

- **Beam Intensity:** 25 Million Beam Candlepower illuminates an object 5002 meters away on a clear night!
- **Electric Beam-Size Focus:** Beam can be widened and narrowed remote electrically, throughout a continuous spectrum.
- **Beam-size Focus Knob:** External Knob changes beam-size with no tools, and provides back-up should the focus motor fail.
- **Beyond 360° of Rotation...** Unique Sliding-Stop Design allows 385 Degrees of horizontal motion.
- **Bullet-Resistant Reflector...** Precision-Optic Reflector with virtually indestructible Nickel Material helps prevent breakage if fixture is impacted by bullets or rocks.
- **Robust Lever-Gear Aiming...** twist lever handle and a rack and pinion design moves head UP and DOWN with built-in friction brake. Swing Lever side to side for horizontal aiming.
- **Thermal Camera (optional):** “NightFINDER™ Feature” adds Thermal Camera to the searchlight head, providing additional Night Vision Capability and Beam/Camera Tracking on target.
- **LED Hybrid (optional):** Auxiliary LED Light Modules project a “Wall of Light”, 100 Meters Wide and 200 Meters away, for strategic wide area, short-range lighting.
- **High Powered Strobe (optional):** Used as Nonlethal weapon to disorient and deny night vision of intruder.
- **Detachable IR Filter (optional):** provides covert surveillance when used with Lowlight Cameras and Night Vision Goggles.

## Searchlight Specifications

**Electric Beam-Size Focus:** 1 to 20° (throughout continuous spectrum)

**Temperature Range:** -25 °C to +48 °C (approx..)

**Environmental Protection:** IP56

**Power Consumption:** 115VAC/7 Amps or 230 VAC/3.5 Amps; 50/60HZ

**Vertical Span:** +35 Degrees to -35 Degrees (Total 70 Degrees approx.)

**Horizontal Span:** Beyond Full Circle (385 Degrees with sliding stop)

**Lamp:** 350 Watt, Xenon Short Arc, 6500 °Kelvin

**Beam Intensity:** 25 Million Candela

**Distance Serviced measuring 1 LUX:** 5002 Meters on a clear night

**Reflector:** Precision Electroformed, Nickel Material, Bullet-Resistant

**Materials:** Marine Grade Aluminum and Stainless Steel

**Finish:** Salt-resistant, Scratch-resistant, Powder Coat or Brass Chrome



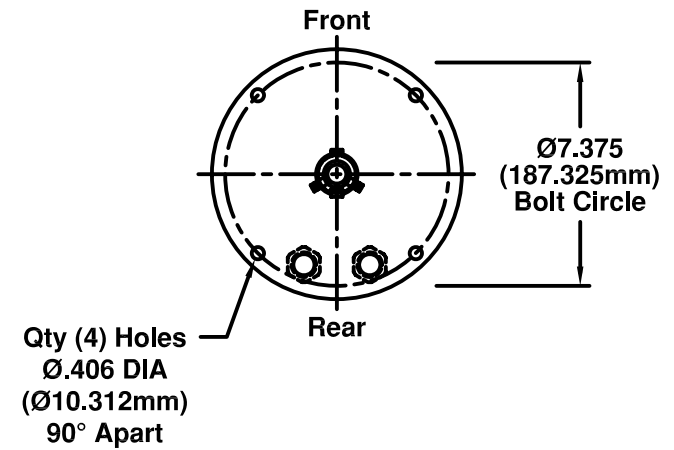
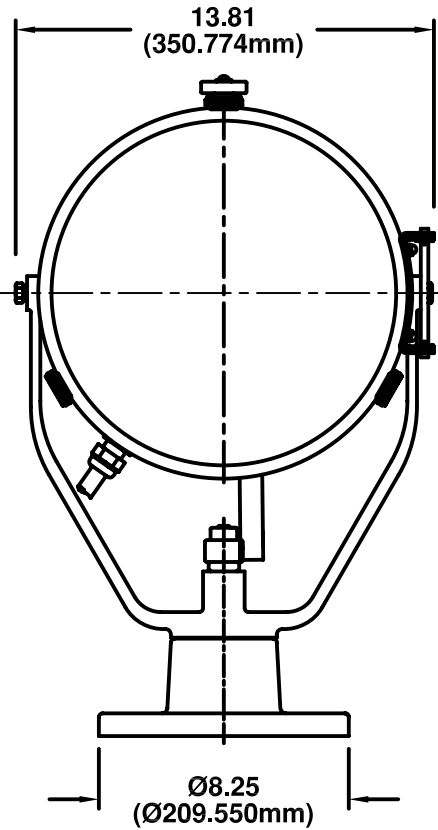
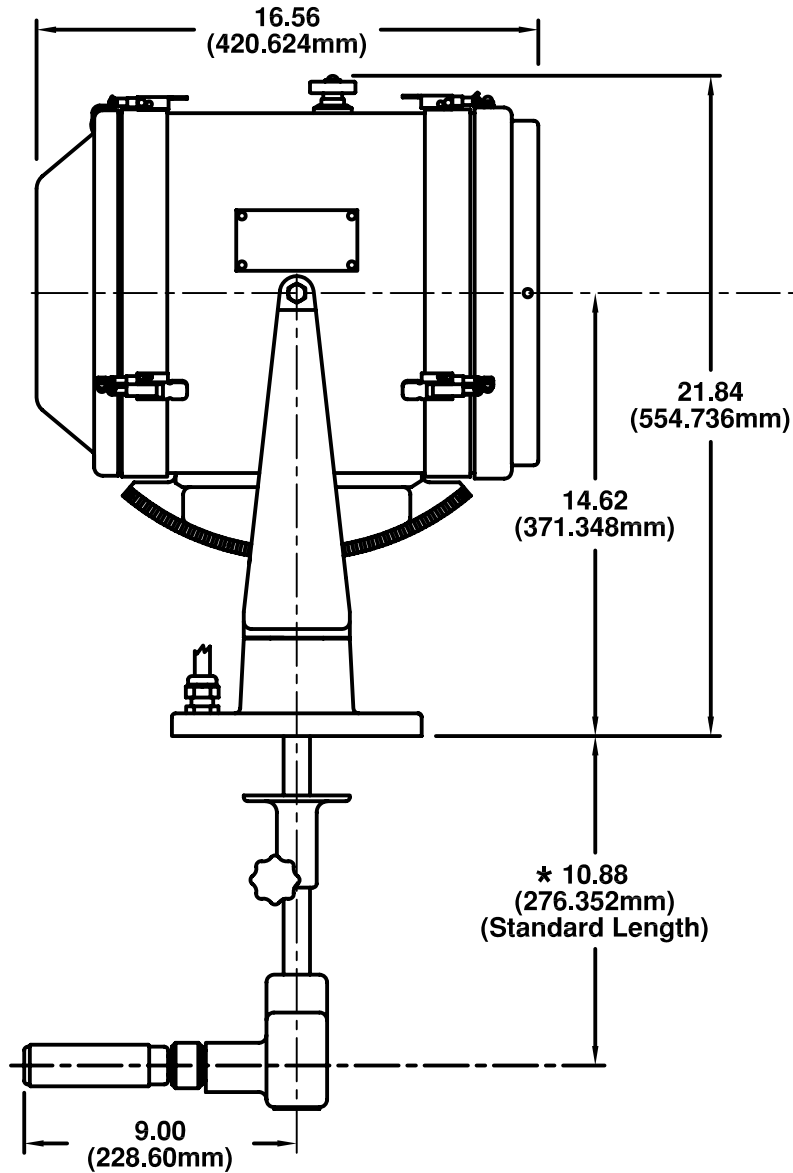
**“Leaders in Searchlight Technology for over 122 years”**



# 350 Watt Xenon Searchlights

## Models XY3CLG-ARF3 and XY3ELG-ARF3

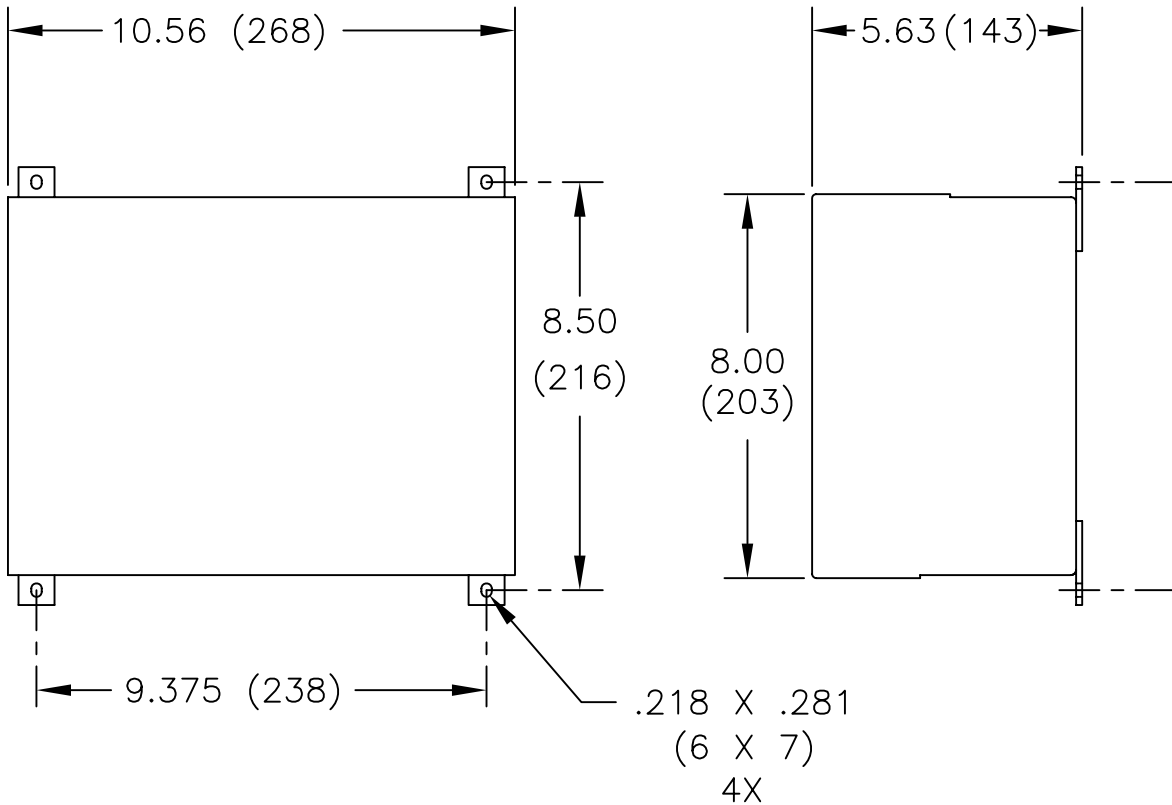
### Dimensions in Inches (mm)



\* NOTE: This control length can be any length as specified by customer. Consult factory for custom dimension.

DRAWN		DATE		THE CARLISLE & FINCH CO. CINCINNATI, OHIO	
RPA		6/17/11			
CHKR		APVD		TITLE	
				350W SEARCHLIGHT	
SIZE		PART NO.		REV	
F		XY3( )LG-ARF3(DIM)		.	
SCALE NONE				SHEET 1 OF 1	

NEXT ASSY	USED ON	SYM	REVISION	DATE	APVD
	350W BULL XE143				



POWER SUPPLY, 350W

MODEL NO.      INPUT VOLTS

3PS115            115VAC

3PS230            230VAC

WEIGHT

7.25 LBS. 3.29 KG.

10.85 LBS. 4.92 KG.

DIMENSIONS INCHES (mm)

DRAWN	DATE
RPA	10/31/95
CHKR	APVD

THE CARLISLE & FINCH CO.  
CINCINNATI, OHIO

TITLE

POWER SUPPLY

SIZE

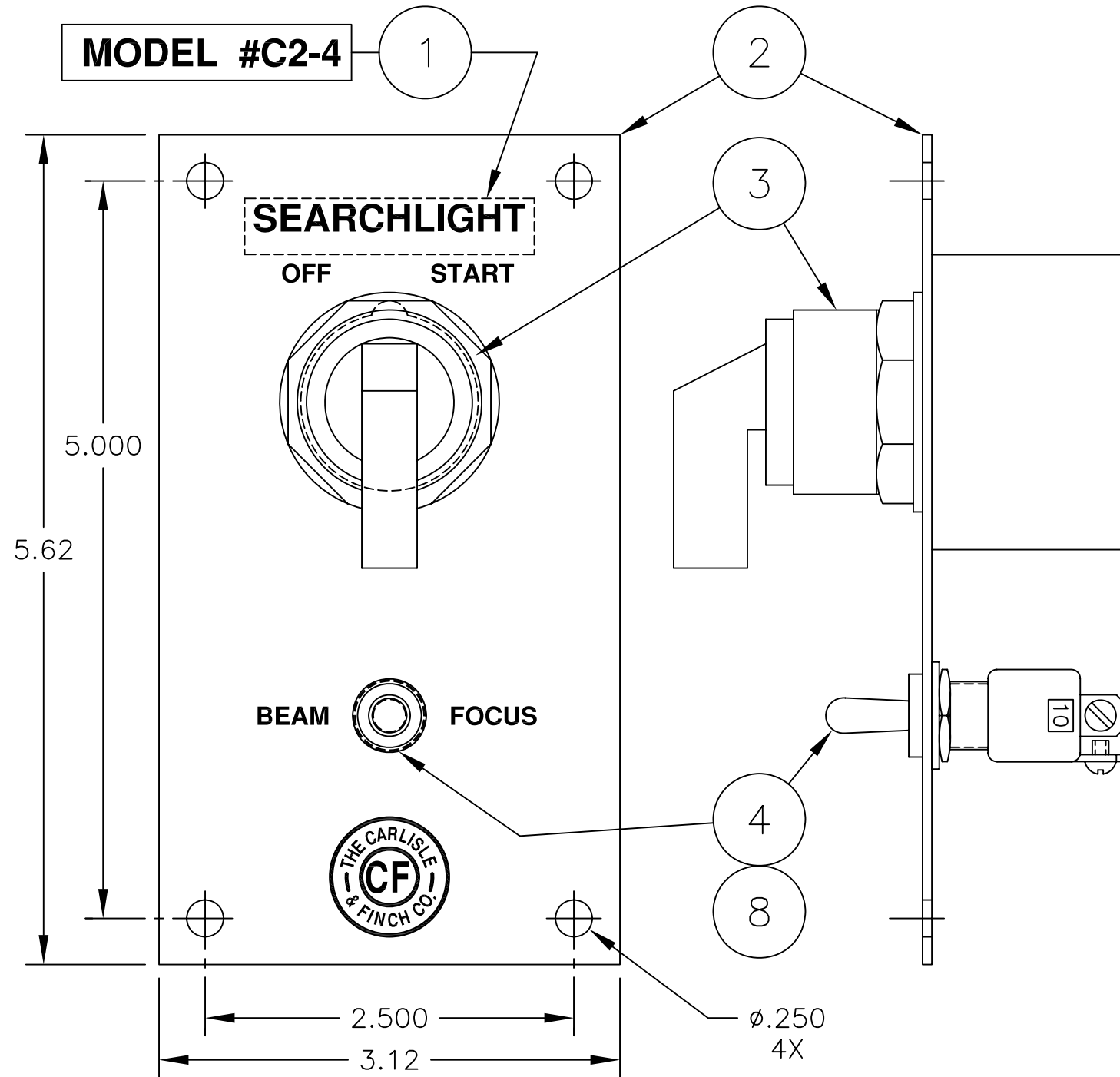
DRAWING NO.

A

11849DIM

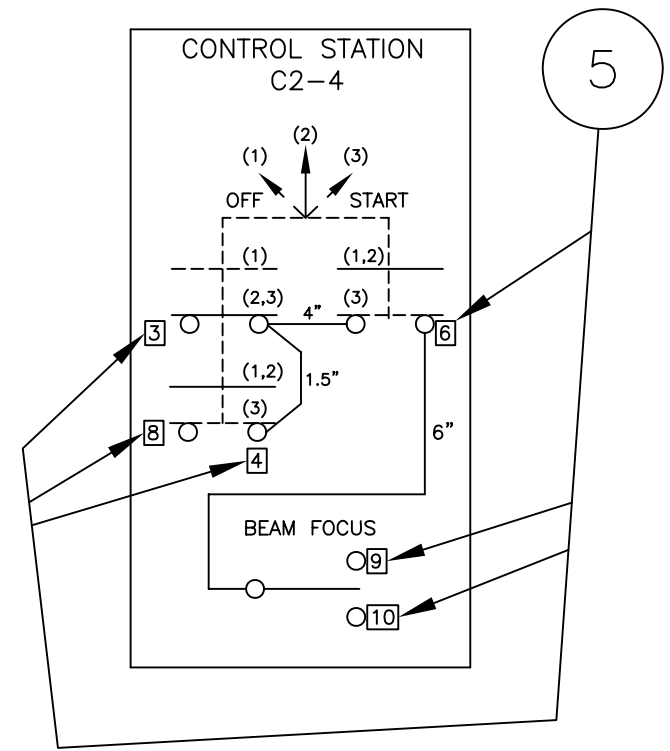
SCALE QUARTER

**MODEL #C2-4**



NEXT ASSY	USED ON
.	350W/500W XE SLS

SYM	REVISION	DATE	APVD
A	REDESIGN, ELECTRICALLY SAME AS C2-4.	12/09	BRF



PC NO.	QTY	NUMBER	DESCRIPTION	NOTE
8	1	9813	LOCKWASHER	
7	1	2329AF	TERMINAL, SPADE, #6, 22-16G (NOT SHOWN)	
6	1.17'	6728	HOOK -UP WIRE	
5	6	.	LABELS	
4	1	9796	SWITCH, TOGGLE, 1PDT	
3	1	9855	SELECTOR SWITCH, 3 POSITION	
2	1	12011-1	PLATE, SWITCH	
1	1		LABEL	

DRAWN RPA		DATE 4/29/96		THE CARLISLE & FINCH CO. CINCINNATI, OHIO	
CHKR		APVD			
TOLERANCES UNLESS SPECIFIED: .XX = ± .03 .XXX = ± .005 ANGLES ± .5° SURFACE FINISH 125 ✓ REMOVE BURRS/SHARP EDGES. DO NOT SCALE DRAWING.				TITLE <b>CONTROL STATION</b>	
SIZE B	PART NO. C2-4			REV A	
SCALE FULL					