

New “LED Hybrid” Feature for Xenon Searchlight

Auxiliary LED’s added to the Searchlight illuminate wide areas at close range, where the narrower Xenon Beam cannot service!

Auxiliary LED Features

- **Eliminates Blind Spots:** LED Beam efficiently illuminates wide areas near Marine Vessel or Guard Tower, where the narrower xenon beam cannot effectively service. See Beam Pattern on page 2.
- **Control Station Integration:** LED Switches are integrated into the Searchlight Controller, thereby taking up no additional console space.
- **Dual LED Module Design:** Two LED Light Modules powered by separate electronics, provide emergency backup, if one fails.
- **Low LED Power Consumption:** Only 35 Watts per module (70 Watts Total!)
- **Long LED Lamp-Life:** 50,000 Hours
- **Voltage Input:** 12VDC or 24VDC
- **Battery Back-up:** Can be run directly off DC battery power with minimal power consumption.
- **Environmentally Robust:** IP67-Rated
- **LED Beam Pattern:** See Exhibit A on page two.



350 Watt Xenon Searchlight with auxiliary LED’s seen above



“Wall of Light” aimed instantly on demand!

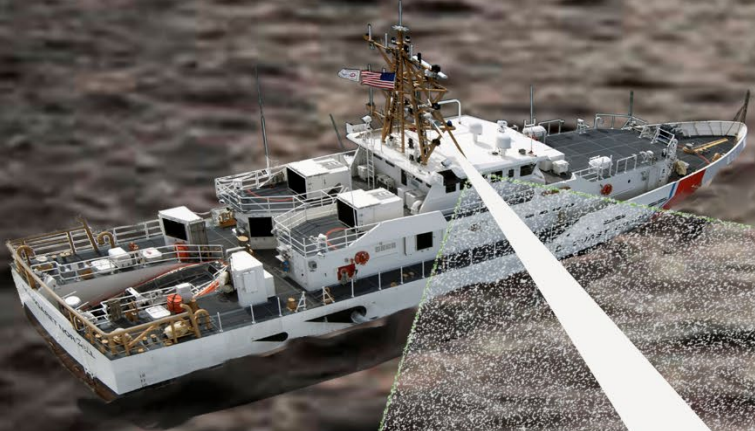
What is a “Hybrid Searchlight”? Although LED development has come a long way, it still cannot compete with the long distances achieved by a xenon searchlight. Therefore, Carlisle & Finch has created the “LED Hybrid” Feature. This optional feature adds auxiliary LED’s to the 350 watt xenon searchlight, thereby creating a “Hybrid Searchlight”, which utilizes the strengths of multiple lighting technologies on demand!

Imagine that a passenger suddenly falls overboard! Using the LED’s, an operator can instantly direct a powerful **“Wall of Light”**, wider than a football field, anywhere around the vessel! This wide LED beam is also extremely effective for **“Patrol Boat Vessel Interdiction”**, **“Docking”**, **“Seeing Workers at Night”** or **“Lighting up a Prison Yard”**. The LED’s have evenly spread illumination, and a “pure white” color rendering, which is very effective at spotting targets in total darkness.

The addition of the auxiliary LED’s will efficiently service wide short-range applications (LED), and long-distance applications (xenon), using one flexible product!



“Leaders in Searchlight Technology for over 126 years”



**Wall
of
Light!**

150 meters
(approx)

100 meters
(approx)

Xenon Long Range Beam